

Extending Student Understanding of Graphs

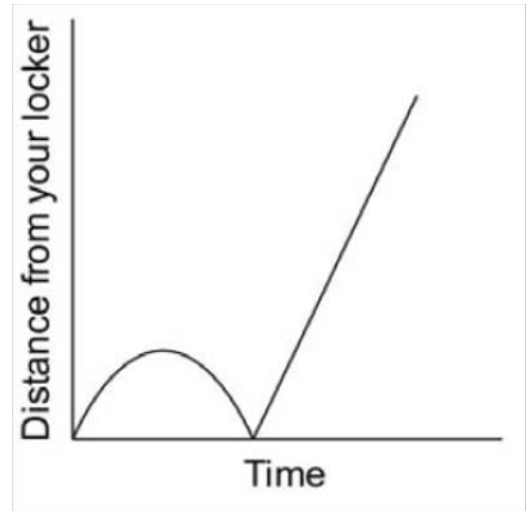
First review a few distance-time graphs using the CBR. Try to make some straight lines, sharp changes, slow changes. Review what the graphs are showing you about distance.

A CBR has been placed at your locker. The CBR will be measuring your distance from your locker.

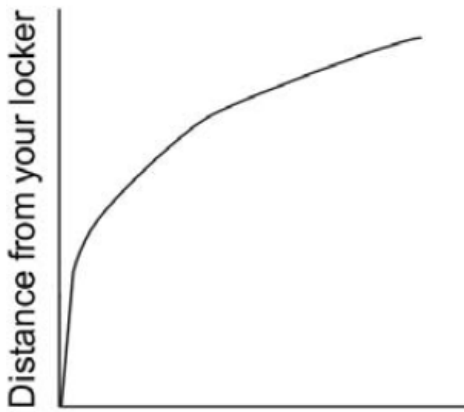
1. Two of the graphs match with two of the stories. One of the stories does not match with any graph that is drawn.
2. Draw a graph on page 2 for the third story.
3. Write a story for the other two graphs.



Graph A



Graph B

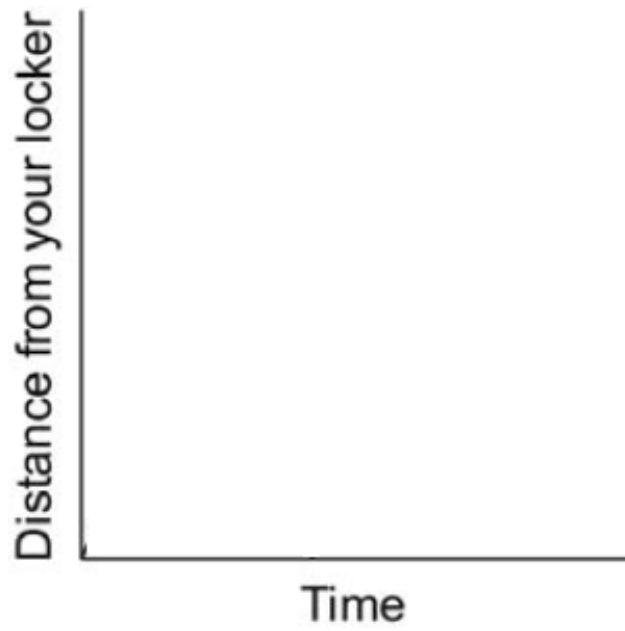


Graph C



Graph D

1. I started to walk to class, but I realized I had forgotten my notebook, so I went back to my locker and then I went quickly at a constant rate to class.
2. I was rushing to get to class when I realized I wasn't really late, so I slowed down a bit.
3. I started walking at a steady, slow, constant rate to my class, and then, realizing I was late, I ran the rest of the way at a steady, faster rate.



Graph for story # _____

Story for Graph _____:

Story for Graph _____: