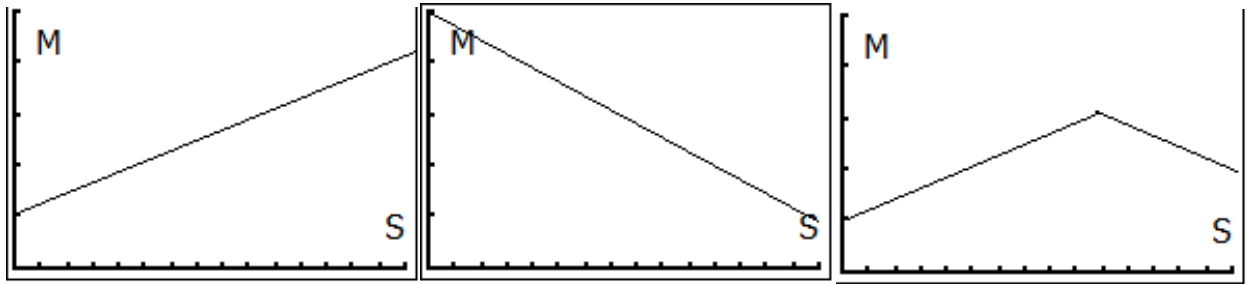


Walking the Line



Study the three pictures above. Each picture illustrates a person walking in front of a CBR. The time, in seconds, is recorded on the horizontal axis for $0 \leq S \leq 15$. The distance, in meters, is recorded on the vertical axis for $0 \leq M \leq 5$.

Write a set of walking instructions for each graph. Tell where the walk begins, how fast the person walks, and whether the person walks toward or away from the CBR. The CBR has been placed at position of zero.

After you write the set of walking instruction, set up the CBR, the walker program and the graphing calculator to collect data on a walk. Set up a 4 meter measuring tape or 4 meter sticks end to end. Use your instructions you have written out to reproduce the graphs above.

After each graph is produced discuss what you could have done better to replicate the graph.